

## LED POST TOP RETROFIT LAMP 360度玉米灯

XGY-CL-A1 30W 40W 50W CORN LAMP SERIES



CE RoHS

FC

RoHS

PLC

LM80 LM79

产品规格

Product Specifications:

型号 M.N	XGY-CL-A1-30	XGY-CL-A1-40	XGY-CL-A1-50
输入功率 Input Power	30W	40W	50W
输入电压 Input Voltage	100-277VAC 50-60HZ		
功率因素 Power Factor	≥0.9		
寿命 Life time	>50,000hrs		
色温 CCT(K)	NW 2700-3200K PW3700-4300K CW 5700-6300K		
光效 η(lm/W)	100-120lm/W		
光通量 Flux(lm)	3000~3600	4000~4800	5000~6000
显色指数 CRI(Ra)	≥80		
出光角度 Beam Angle(°)	360°		
光源规格 LED Model	SMD2835 168pcs	SMD2835 224pcs	SMD2835 280pcs
LED 品牌 LED Brand	Epistar		
尺寸 Size Ø*H(mm)	Ø88*H258	Ø88*H258	Ø88*H258
材质 Material	PBT+Aluminum+PC		
灯头 Socket Type	E26/E27,E39/E40		



## LED POST TOP RETROFIT LAMP 360度玉米灯

XGY-CL-B1 12W~24W CORN LAMP SERIES



CE RoHS

FC

RoHS

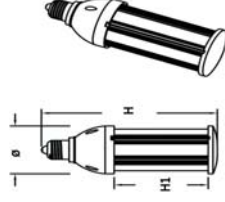
PLC

LM80 LM79

产品规格

Product Specifications:

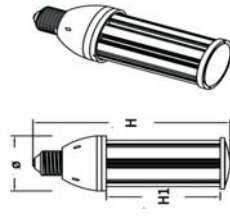
型号 M.N	XGY-CL-B1-I12	XGY-CL-B1-I16	XGY-CL-B1-I20	XGY-CL-B1-I24
输入功率 Input Power	12W	16W	20W	24W
输入电压 Input Voltage	100-277VAC 50-60HZ			
功率因素 Power Factor	≥0.9			
寿命 Life time	>50,000hrs			
色温 CCT(K)	NW 2700-3200K PW3700-4300K CW 5700-6300K			
光效 η(lm/W)	100-120lm/W			
光通量 Flux(lm)	1200~1300	1600~1800	2000~2300	2400~2700
显色指数 CRI(Ra)	≥80			
出光角度 Beam Angle(°)	360°			
光源规格 LED Model	SMD2835 96pcs	SMD2835 112pcs	SMD2835 135pcs	SMD2835 165pcs
LED 品牌 LED Brand	Epistar			
尺寸 Size Ø*H(mm)	Ø64*H157/164	Ø64*H167/174	Ø64*H187/194	Ø64*H207/214
材质 Material	PBT+Aluminum+PC			
灯头 Socket Type	E26/E27,E39/E40			





## LED POST TOP RETROFIT LAMP 360度玉米灯

XGY-CL-B1 27W~54W CORN LAMP SERIES



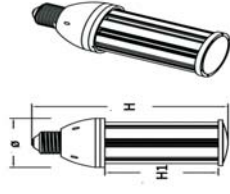
CE RoHS LED LAMP FC ENEC DLC LM80 LM79

产品规格  
Product Specifications:

型号 M/N	XGY-CL-B1-27	XGY-CL-B1-36	XGY-CL-B1-45	XGY-CL-B1-54
输入功率 Input Power	27W	36W	45W	54W
输入电压 Input Voltage	100-277VAC 50-60HZ			
功率因素 Power Factor	≥0.9			
寿命 Life time	> 50,000hrs			
色温 CCT(K)	NW 2700-3200K PW3700-4300K CW 5700-6300K			
光效 η(lm/W)	100-120lm/W			
光通量 Flux(lm)	2700~3000	3600~4200	4500~5300	5400~6000
显色指数 CRI(Ra)	≥80			
出光角度 Beam Angle(°)	360°			
光源规格 LED Model	SMD5630 90pcs	SMD5630 117pcs	SMD5630 144pcs	SMD5630 162pcs
LED 品牌 LED Brand	Epistar			
尺寸 Size Ø*H(mm)	Ø93*H217/228			
材质 Material	PBT+Aluminum+PC			
灯头 Socket Type	E26/E27, E39/E40			

## LED POST TOP RETROFIT LAMP 360度玉米灯

XGY-CL-B1 65W~120W CORN LAMP SERIES



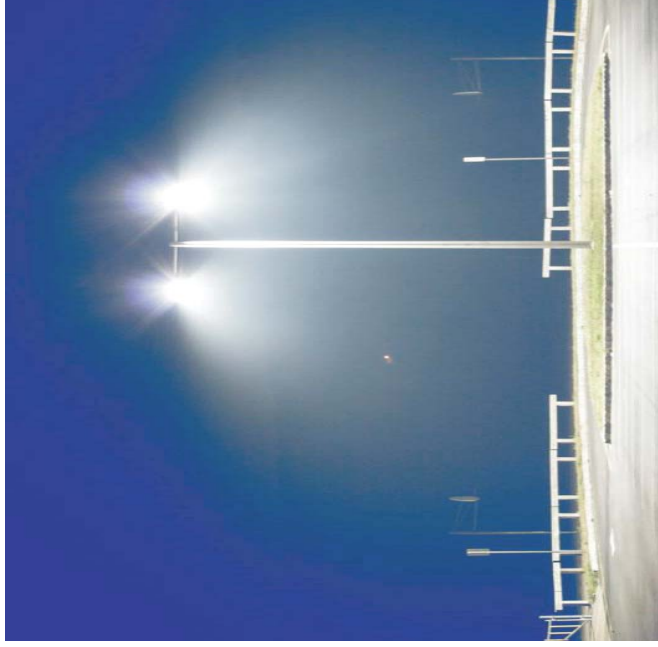
CE RoHS LED LAMP FC ENEC DLC LM80 LM79

产品规格  
Product Specifications:

型号 M/N	XGY-CL-B1-65	XGY-CL-B1-80	XGY-CL-B1-100	XGY-CL-B1-120
输入功率 Input Power	65W	80W	100W	120W
输入电压 Input Voltage	100-277VAC 50-60HZ			
功率因素 Power Factor	≥0.9			
寿命 Life time	> 50,000hrs			
色温 CCT(K)	NW 2700-3200K PW3700-4300K CW 5700-6300K			
光效 η(lm/W)	100-120lm/W			
光通量 Flux(lm)	6500~7000	8000~9600	10000~12000	12000~14000
显色指数 CRI(Ra)	≥80			
出光角度 Beam Angle(°)	360°			
光源规格 LED Model	SMD5630 176pcs	SMD5630 240pcs	SMD5630 288pcs	SMD5630 336pcs
LED 品牌 LED Brand	Epistar			
尺寸 Size Ø*H(mm)	Ø118*H248/255			
材质 Material	PBT+Aluminum+PC			
灯头 Socket Type	E26/E27, E39/E40			

## LED POST TOP RETROFIT LAMP 360度玉米灯

XGY-CL-B1 120W 150W CORN LAMP SERIES



CE RoHS     **LM80 LM79**

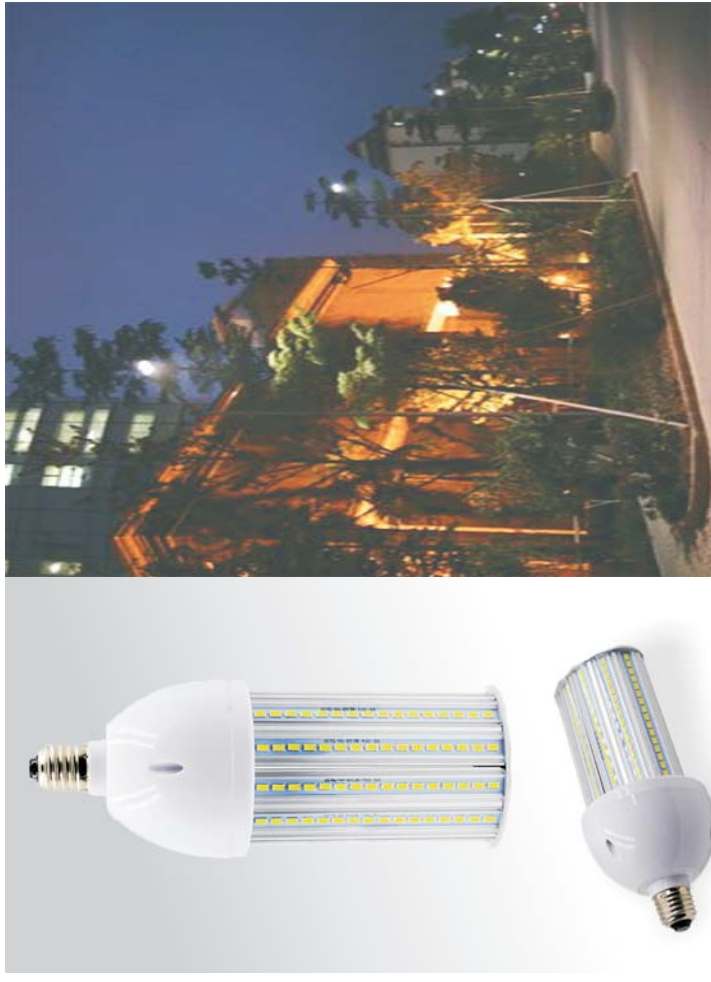
产品规格

Product Specifications:

型号 M.N	XGY-CL-B1-120	XGY-CL-B1-150
输入功率 Input Power	120W	150W
输入电压 Input Voltage	100-277VAC 50-60HZ	
功率因素 Power Factor	≥0.9	
寿命 Life time	>50,000hrs	
色温 CCT(K)	NW 2700-3200K PW3700-4300K CW 5700-6300K	
光效 η(lm/W)	100-120lm/W	
光通量 Flux(lm)	12000~14000	15000~17000
显色指数 CR(Ra)	≥80	
出光角度 Beam Angle(°)	360°	
光源规格 LED Model	SMD5630 297pcs	SMD5630 378pcs
LED 品牌 LED Brand	Epistar	
尺寸 Size Ø*H(mm)	ø127*H327	ø127*H387
材质 Material	PBT+Aluminum+PC	
灯头 Socket Type	E39/E40	

## SHOE BOX / WALL PACK RETROFITS 180度玉米灯

XGY-CL-C1 20W~100W CORN LAMP SERIES



CE RoHS     **LM80 LM79**

产品规格

Product Specifications:

型号 M.N	XGY-CL-C1-20	XGY-CL-C1-30	XGY-CL-C1-35	XGY-CL-C1-40	XGY-CL-C1-60	XGY-CL-C1-80	XGY-CL-C1-100
输入功率 Input Power	20W	30W	35W	40W	60W	80W	100W
输入电压 Input Voltage	100-277VAC 50-60HZ						
功率因素 Power Factor	≥0.9						
寿命 Life time	>50,000hrs						
色温 CCT(K)	NW 2700-3200K PW3700-4300K CW 5700-6300K						
光效 η(lm/W)	100-120lm/W						
光通量 Flux(lm)	2000~2400	3000~3500	3500~4200	4000~4700	6000~7000	8000~9000	10000~11000
显色指数 CR(Ra)	≥80						
出光角度 Beam Angle(°)	180°						
光源规格 LED Model	SMD5630 66pcs	SMD5630 96pcs	SMD5630 114pcs	SMD5630 132pcs	SMD5630 168pcs	SMD5630 228pcs	SMD3835 288pcs
LED 品牌 LED Brand	Epistar						
尺寸 Size Ø*H(mm)	ø95*H180	ø95*H215	ø95*H227	ø95*H247.5	ø120*H267.7	ø120*H310.2	ø120*H358.2
材质 Material	PBT+Aluminum+PC						
灯头 Socket Type	E26/E27,E39/E40						